

Wireless @ Johns Hopkins

'eduroam' Configuration Guide:

MAC OS

Johns Hopkins has joined the eduroam (education roaming) federation. Membership allows campus community members at any participating institution to use wireless network services at any other participating institution with the simplicity and convenience of providing the login credentials issued to them by their home institution.

This means that Johns Hopkins students, faculty, and staff may visit member institutions domestically and abroad and use their JHED credentials to log into wireless. Additionally, anyone with a valid JHED_ID may access the wireless network here at Johns Hopkins. At JHU, the level of service provided by eduroam will be the same as the level of service provided by the hopkins wireless network.

You will need to use your credentials in this format:

Login: JHED_ID@jhu.edu
Password: JHED password

To connect to eduroam at a **visiting institution** you will need the following information:

SSID (Network Name): eduroam
TCP/IP: DHCP
EAP Type: PEAP
Network Authentication: <**visited institution authentication type**>
Data Encryption: <**visited institution encryption type**>
Authentication Method/Protocol: MSCHAP-v2
Trusted Root Certification Authorities: InCommon/AddTrust External Root CA
Server name: freeradiuspilot.win.ad.jhu.edu

To connect to eduroam at **Johns Hopkins** you will need the following information:

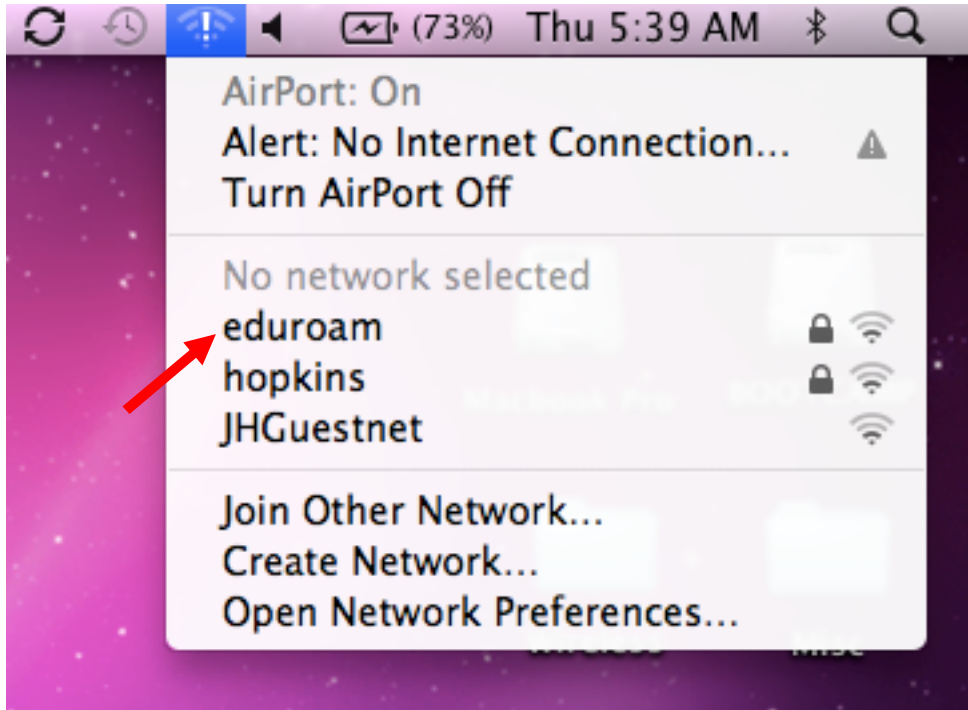
SSID (Network Name): eduroam
TCP/IP: DHCP
EAP Type: PEAP
Network Authentication: WPA2
Data Encryption: AES
Authentication Method/Protocol: MSCHAP-v2
Trusted Root Certification Authorities: InCommon/AddTrust External Root CA
Server name: freeradiuspilot.win.ad.jhu.edu

Please see below for illustrated instructions.

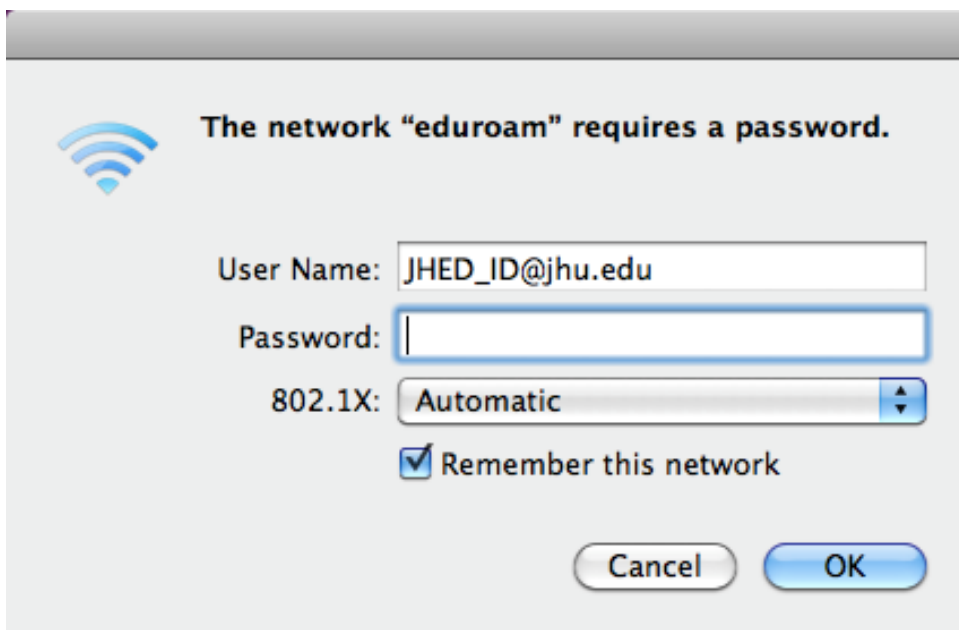
Wireless @ Johns Hopkins

Connecting to “eduroam” at JHU:

Step 1: Click the wireless icon on the top right of the screen and select **eduroam**.

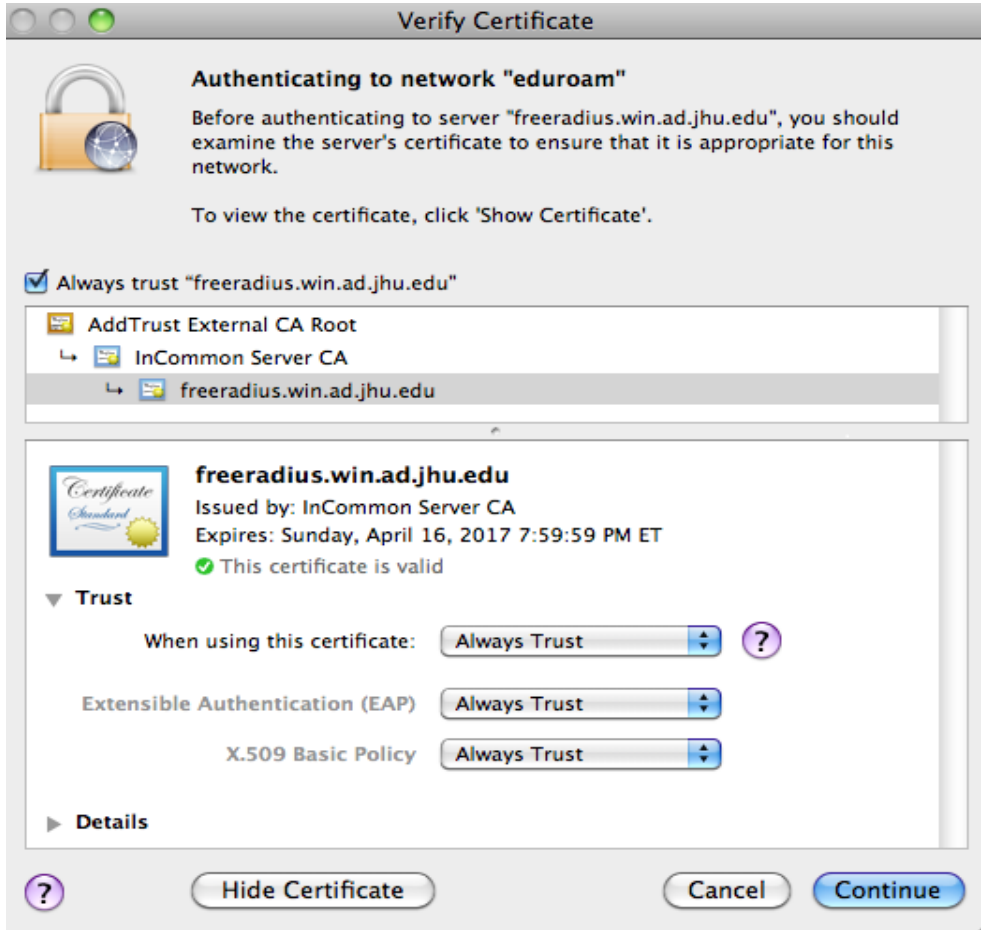


Step 2: A Network Authentication box will pop-up, requesting credentials. Enter your username (JHED_ID@jhu.edu), followed by your password.



Wireless @ Johns Hopkins

Step 3: A Security Alert should pop-up for the server certificate. Click **Continue**.



You are now on the network!

Where do I get additional help?

Technical Assistance (walk-up)

Garland Hall Basement

Monday - Friday 8:00 AM - 4:30PM

Contact the Support Center at:

(410)955-HELP [(410)955-4357]	Johns Hopkins East Baltimore
(410)516-HELP [(410)516-4357]	Johns Hopkins Homewood Campus
(443)997-HELP [(443)997-4357]	Johns Hopkins Mount Washington