

Wireless @ Johns Hopkins

'eduroam' Configuration Guide:

Windows XP

Johns Hopkins has joined the eduroam (education roaming) federation. Membership allows campus community members at any participating institution to use wireless network services at any other participating institution with the simplicity and convenience of providing the login credentials issued to them by their home institution.

This means that Johns Hopkins students, faculty, and staff may visit member institutions domestically and abroad and use their JHED credentials to log into wireless. Additionally, anyone with a valid JHED_ID may access the wireless network here at Johns Hopkins. At JHU, the level of service provided by eduroam will be the same as the level of service provided by the hopkins wireless network.

You will need to use your credentials in this format:

Login: JHED_ID@jhu.edu
Password: JHED password

To connect to eduroam at a **visiting institution** you will need the following information:

SSID (Network Name): eduroam
TCP/IP: DHCP
EAP Type: PEAP
Network Authentication: <**visited institution authentication type**>
Data Encryption: <**visited institution encryption type**>
Authentication Method/Protocol: MSCHAP-v2
Trusted Root Certification Authorities: InCommon/AddTrust External Root CA
Server name: freeradiuspilot.win.ad.jhu.edu

To connect to eduroam at **Johns Hopkins** you will need the following information:

SSID (Network Name): eduroam
TCP/IP: DHCP
EAP Type: PEAP
Network Authentication: WPA2
Data Encryption: AES
Authentication Method/Protocol: MSCHAP-v2
Trusted Root Certification Authorities: InCommon/AddTrust External Root CA
Server name: freeradiuspilot.win.ad.jhu.edu

Please see below for illustrated instructions.

Wireless @ Johns Hopkins

Connecting to “eduroam” at JHU:

Step 1: From the **Start Menu**, click on **Connect To** and select **Show all connections**.



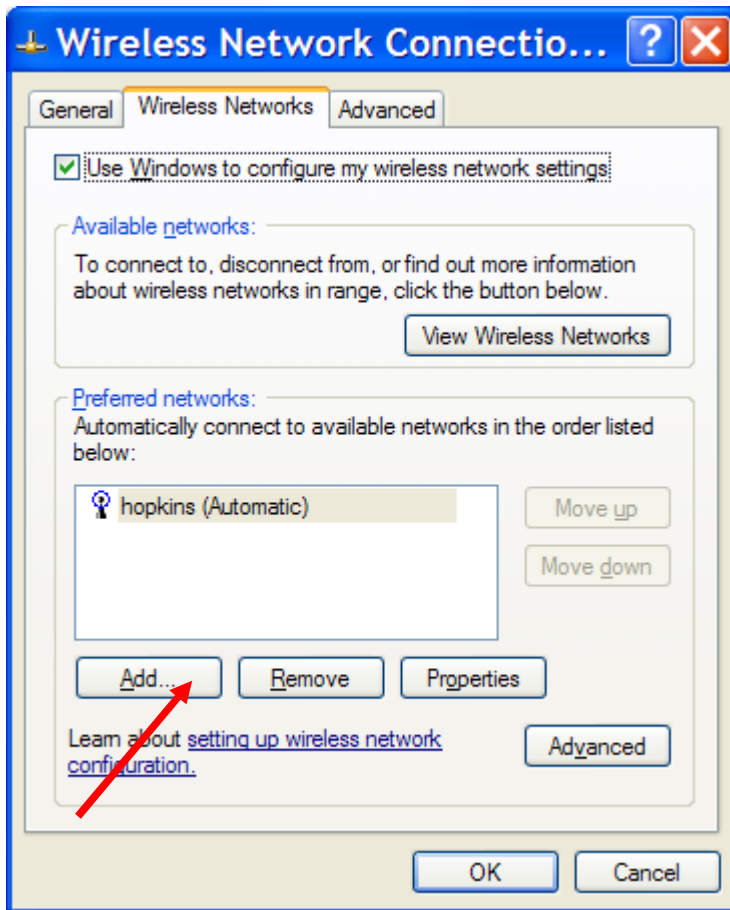
Step 2: **Highlight** the Wireless Network Connection, and right click. Select **Properties** at the bottom of the menu.

NOTE: Your wireless card must be enabled to make changes.



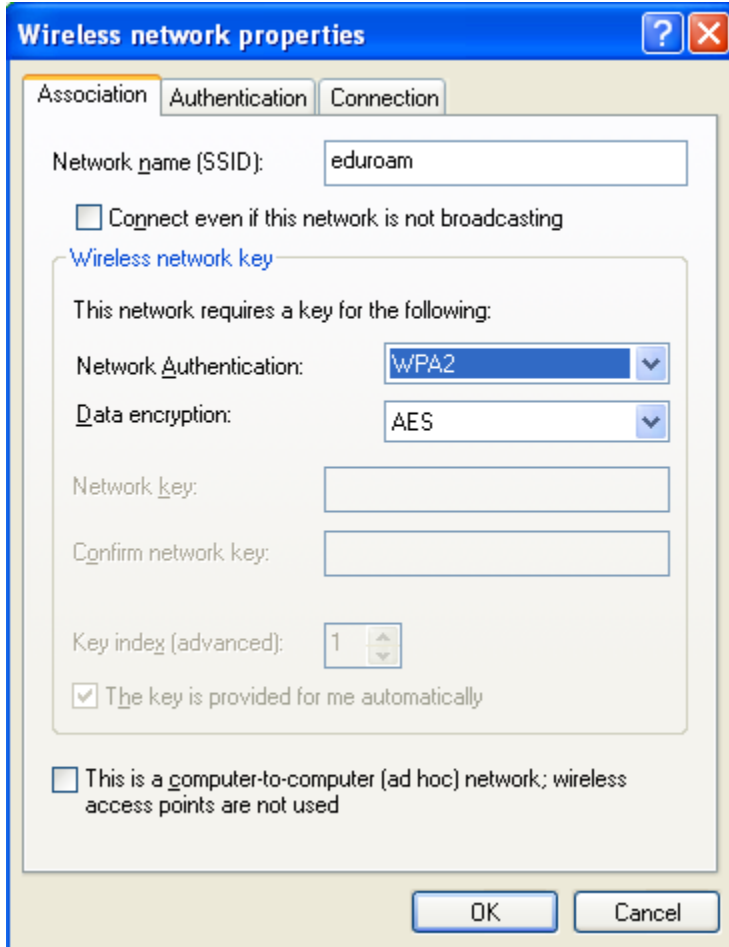
Wireless @ Johns Hopkins

Step 3: You should now see the wireless network properties. Select the **Wireless Networks** tab. Then click **Add**.



Wireless @ Johns Hopkins

Step 4: Configure as shown below. Then click the **Authentication** tab.



The screenshot shows the 'Wireless network properties' dialog box with the 'Authentication' tab selected. The 'Network name (SSID)' is set to 'eduroam'. The 'Connect even if this network is not broadcasting' checkbox is unchecked. The 'Wireless network key' section is expanded, showing 'This network requires a key for the following:'. The 'Network authentication' dropdown is set to 'WPA2' and the 'Data encryption' dropdown is set to 'AES'. The 'Network key' and 'Confirm network key' fields are empty. The 'Key index (advanced)' is set to '1'. The 'The key is provided for me automatically' checkbox is checked. The 'This is a computer-to-computer (ad hoc) network; wireless access points are not used' checkbox is unchecked. The 'OK' and 'Cancel' buttons are at the bottom.

Wireless network properties

Association Authentication Connection

Network name (SSID): eduroam

Connect even if this network is not broadcasting

Wireless network key

This network requires a key for the following:

Network authentication: WPA2

Data encryption: AES

Network key:

Confirm network key:

Key index (advanced): 1

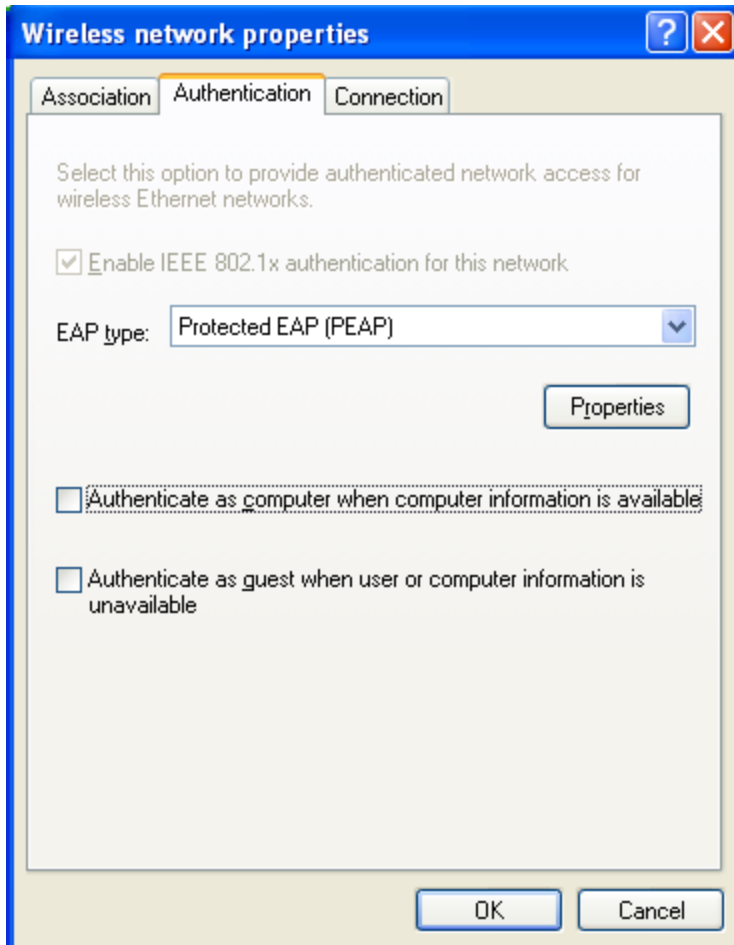
The key is provided for me automatically

This is a computer-to-computer (ad hoc) network; wireless access points are not used

OK Cancel

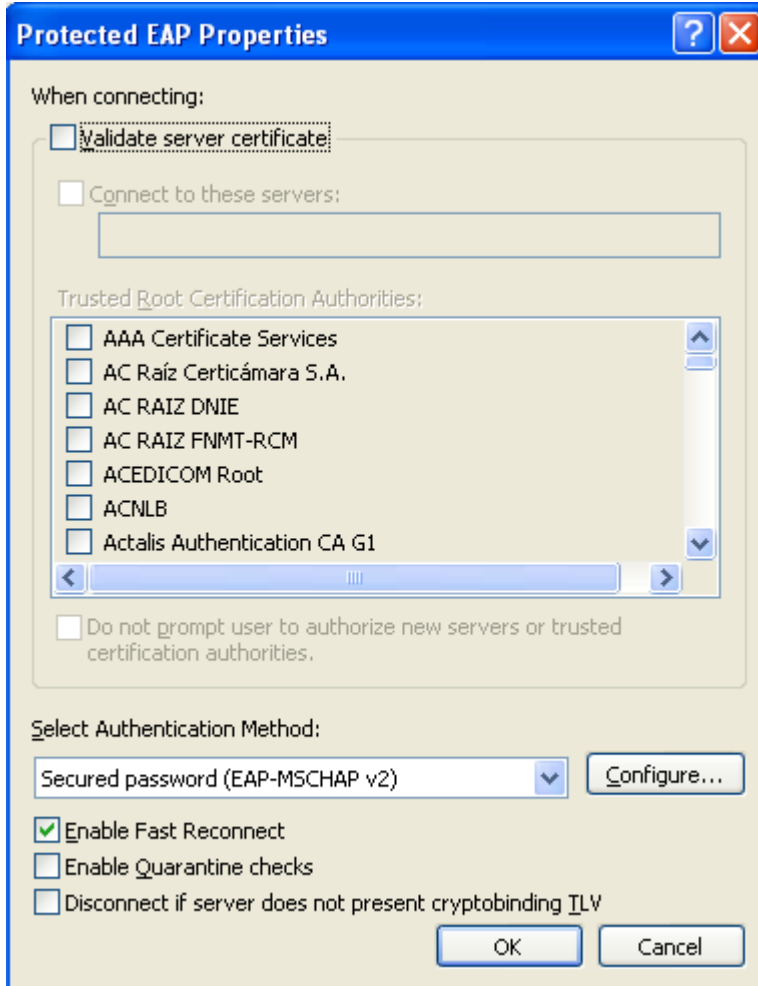
Wireless @ Johns Hopkins

Step 5: Configure as seen below. Then click **Properties**.

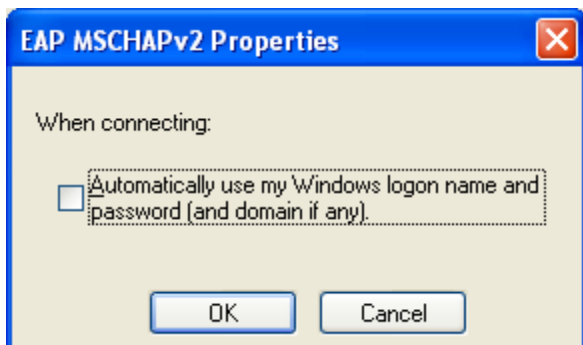


Wireless @ Johns Hopkins

Step 6: Configure as seen below. Then click **Configure**.

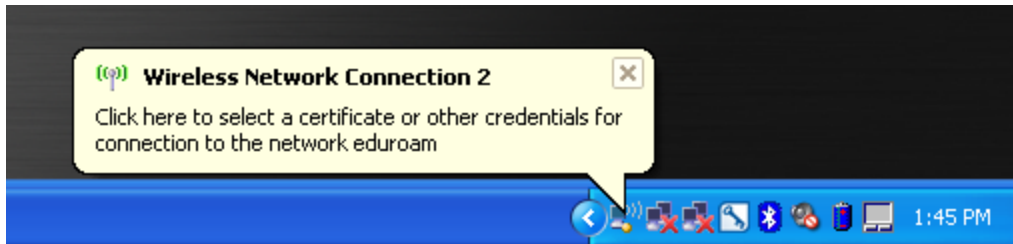


Step 7: Uncheck the box below and click **OK** until you are back to the desktop.

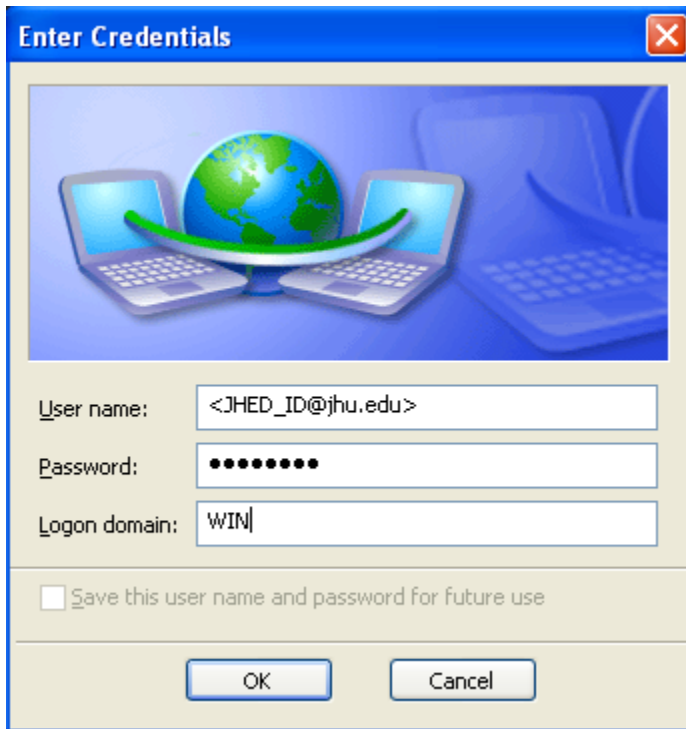


Wireless @ Johns Hopkins

Step 8: Click the balloon that pops-up at the bottom of the screen.



Step 9: Enter your credentials, using your **JHED_ID @jhu.edu**, as the username, JHED_ID as password, and WIN Domain.



You are now on the network!

Wireless @ Johns Hopkins

Where do I get additional help?

Technical Assistance (walk-up)

Garland Hall Basement

Monday - Friday 8:00 AM - 4:30PM

Contact the Support Center at:

(410)955-HELP [(410)955-4357] Johns Hopkins East Baltimore

(410)516-HELP [(410)516-4357] Johns Hopkins Homewood Campus

(443)997-HELP [(443)997-4357] Johns Hopkins Mount Washington