

Wireless @ Johns Hopkins

Wireless Install Guide:

Apple Macintosh OS X 10.7.X "LION"

NOTE: Users familiar with OS X Tiger will notice that the **Internet Connect** utility has been replaced with **Network Preferences**.

Additional **hopkins** wireless network instructions and requirements for Mac OS X and Windows can be found at:

<http://www.it.johnshopkins.edu/services/network/wireless/>

The Johns Hopkins Institutions offer the **hopkins** wireless network to faculty, staff, students, or anyone with a valid JHED ID. The **hopkins** wireless network utilizes WiFi Protected Access (WPA2) with 256-bit Advanced Encryption Standard (AES), to provide a high level of security and access.

How do I find out my JHED account information?

The following steps will allow you to activate your JHED ID. You will need access to a wired (ethernet) connection.

Step 1: Open a web browser and go to <http://my.johnshopkins.edu>.

Step 2: Click the **First Time JHED User** link.

Step 3: Follow the instructions on the login page to find out your Login ID and to set your password.

JHED account and Active Directory credentials should be the same except for some grandfathered accounts. If you have issues with signing in when asked for your User ID and password, please contact the Help Desk, (410) 955-HELP, to correct the issue.

Wireless @ Johns Hopkins

How to configure “hopkins” for Macintosh OS X 10.7.x

Step 1: Click on the **Airport** icon and select **hopkins**.

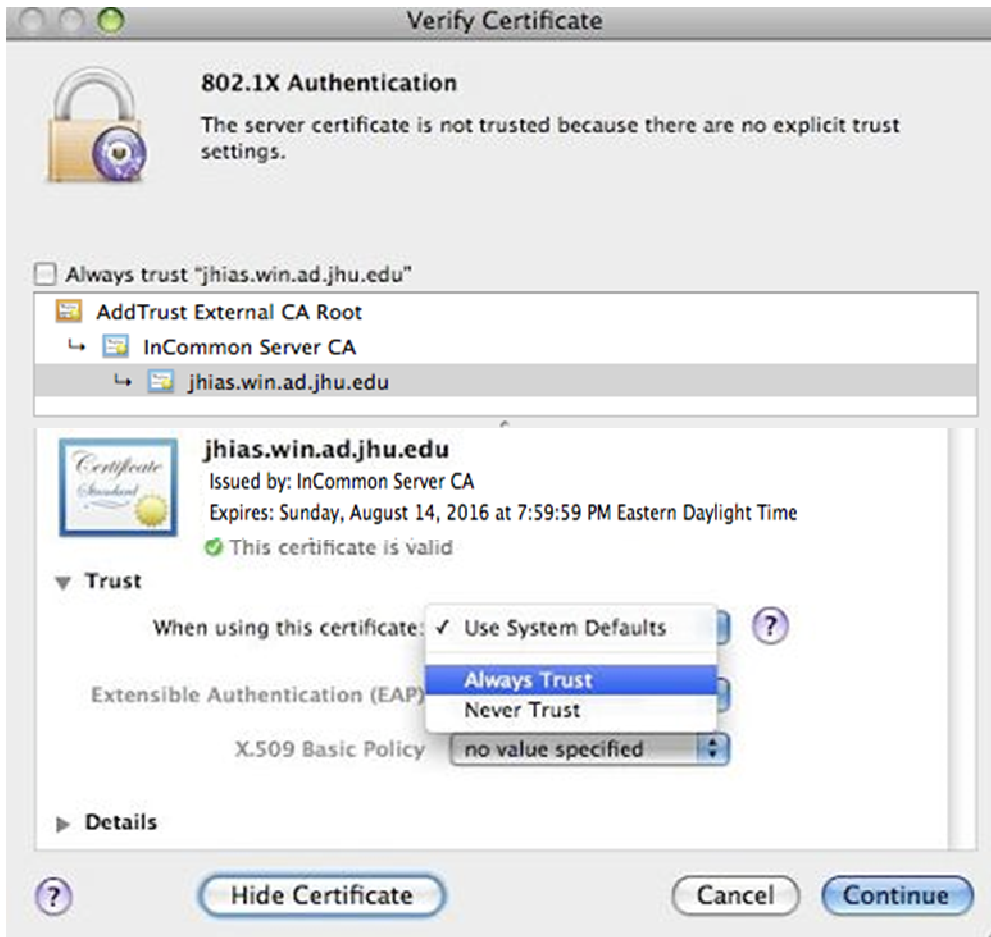


Step 2: You will be prompted to accept our certificate. Click on **Show Certificate**.



Wireless @ Johns Hopkins

Step 3: You must trust this certificate. Click on the arrow beside the certificate **Trust** settings to expand the option. When using this certificate select **Always Trust**.

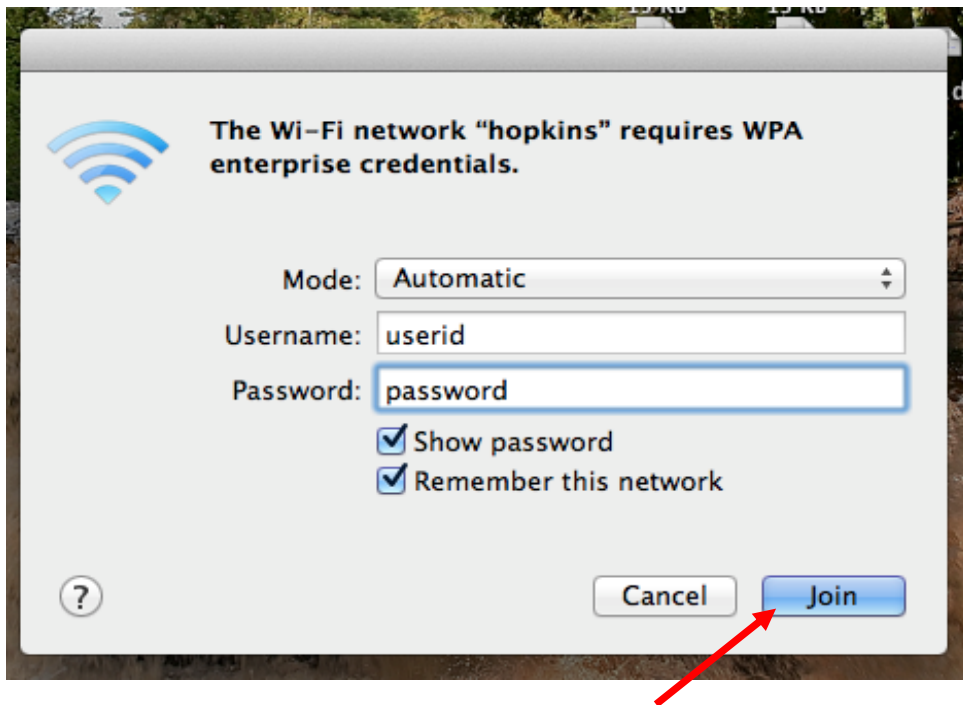


NOTE: You will be prompted for your Mac OS X username and password.

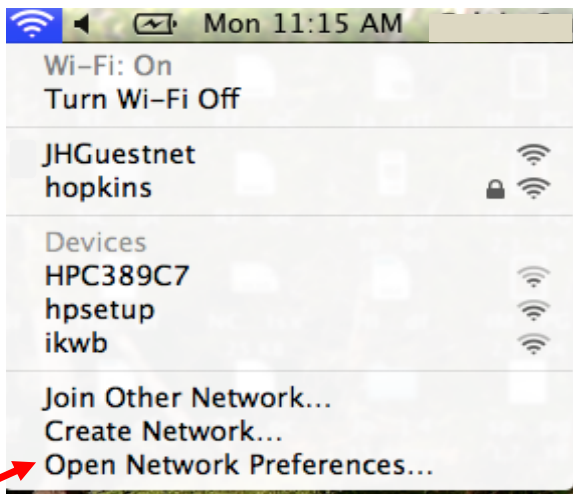
Then click **Continue**.

Wireless @ Johns Hopkins

Step 4: A window should pop-up. Please fill out your **JHED** credentials. Click **Join**.

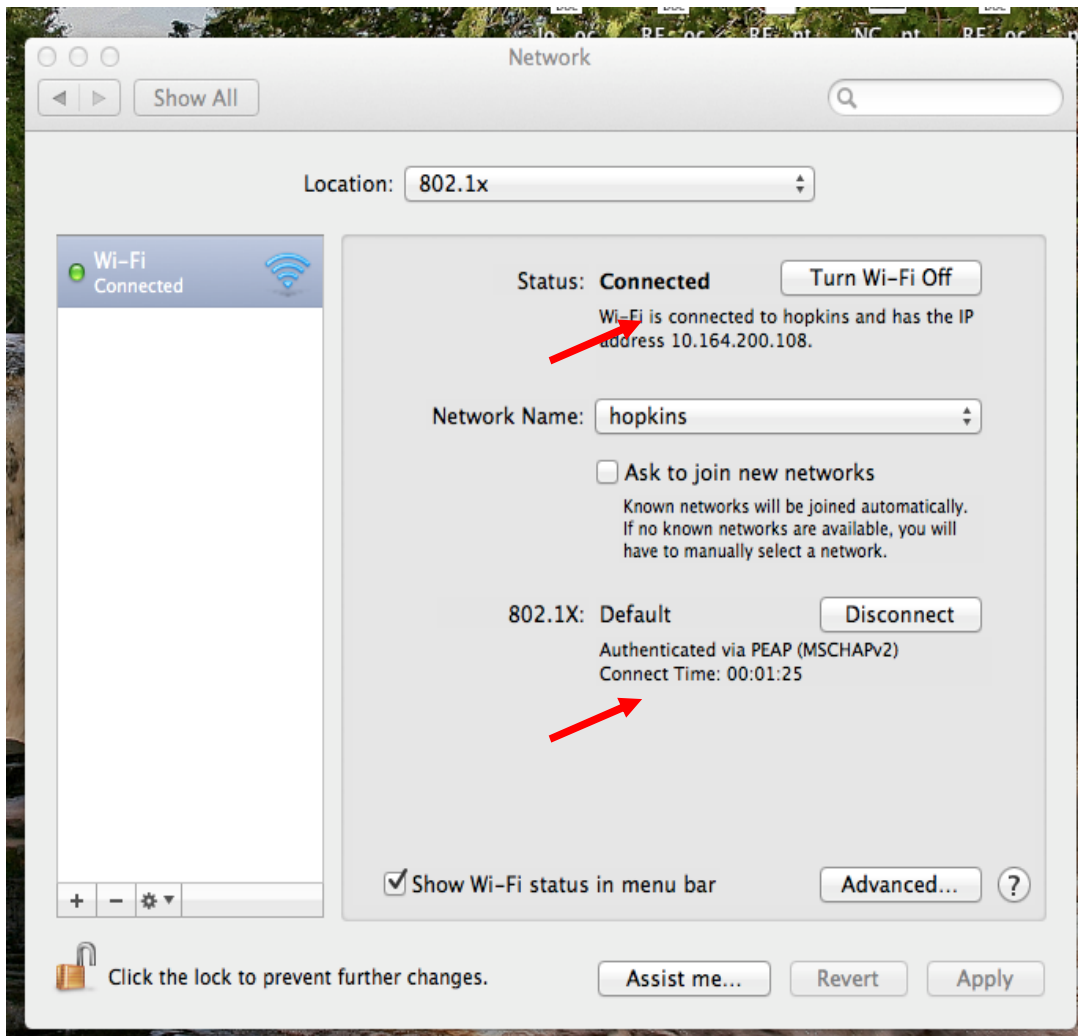


Step 5: You can check your connection by going to the **Airport** icon and selecting **Open Network Preferences**.



Wireless @ Johns Hopkins

Step 6: Verify the status of your connection; look for **Connected** and **Authenticated**.



You are now on the network!

Where do I get additional help?

Homewood Campus:

Technical Assistance (walk-up)

Garland Hall Basement

Monday - Friday 8:00 AM – 4:30 PM

Contact the Support Center at:

(410) 955-HELP [(410) 955-4357] Johns Hopkins East Baltimore

(410) 516-HELP [(410) 516-4357] Johns Hopkins Homewood Campus

(443) 997-HELP [(443) 997-4357] Johns Hopkins Mount Washington