

# Wireless @ Johns Hopkins

## Wireless Install Guide:

### Apple Macintosh OS X 10.6.X "SNOW LEOPARD"

Additional **hopkins** wireless network instructions and requirements for Mac OS X and Windows can be found at:

<http://www.it.johnshopkins.edu/services/network/wireless/>

The Johns Hopkins Institutions offer the **hopkins** wireless network to faculty, staff, students, or anyone with a valid JHED ID. The **hopkins** wireless network utilizes WiFi Protected Access (WPA2) with 256-bit Advanced Encryption Standard (AES), to provide a high level of security and access.

### How do I find out my JHED account information?

The following steps will allow you to activate your JHED ID. You will need access to a wired (ethernet) connection.

**Step 1:** Open a web browser and go to <http://my.johnshopkins.edu>.

**Step 2:** Click the **First Time JHED User** link.

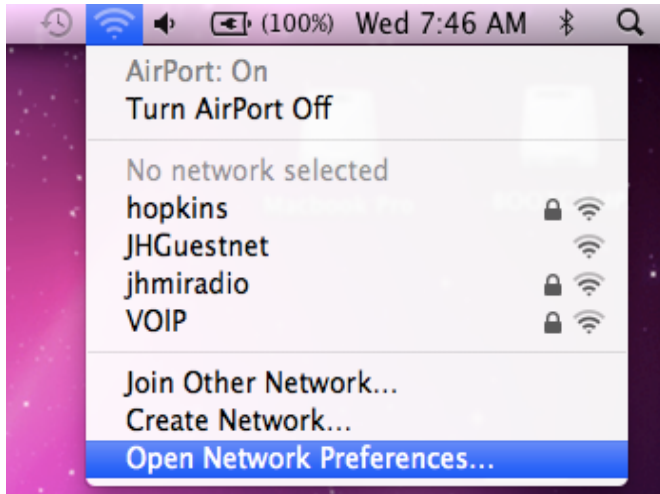
**Step 3:** Follow the instructions on the login page to find out your Login ID and to set your password.

JHED account and Active Directory credentials should be the same except for some grandfathered accounts. If you have issues with signing in when asked for your User ID and password, please contact the Help Desk, (410) 955-HELP, to correct the issue.

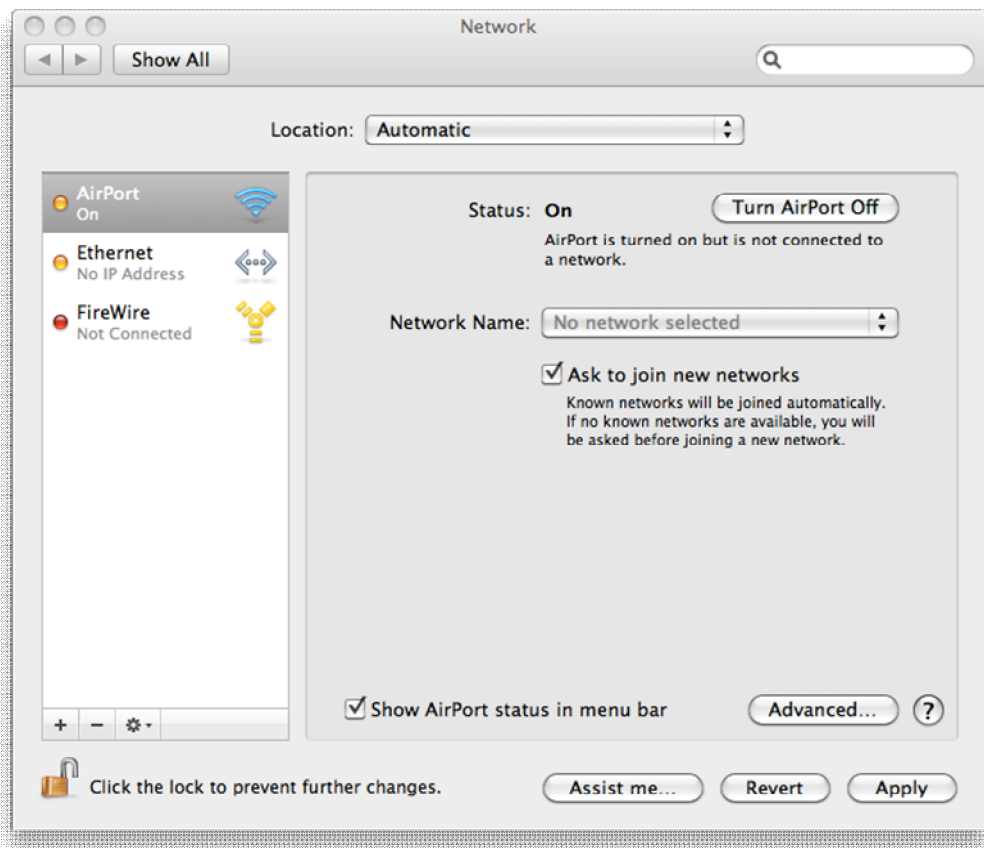
# Wireless @ Johns Hopkins

## How to configure “hopkins” for Macintosh OS X 10.6.x

**Step 1:** Go to the **Airport** menu and choose **Open Network Preferences**.

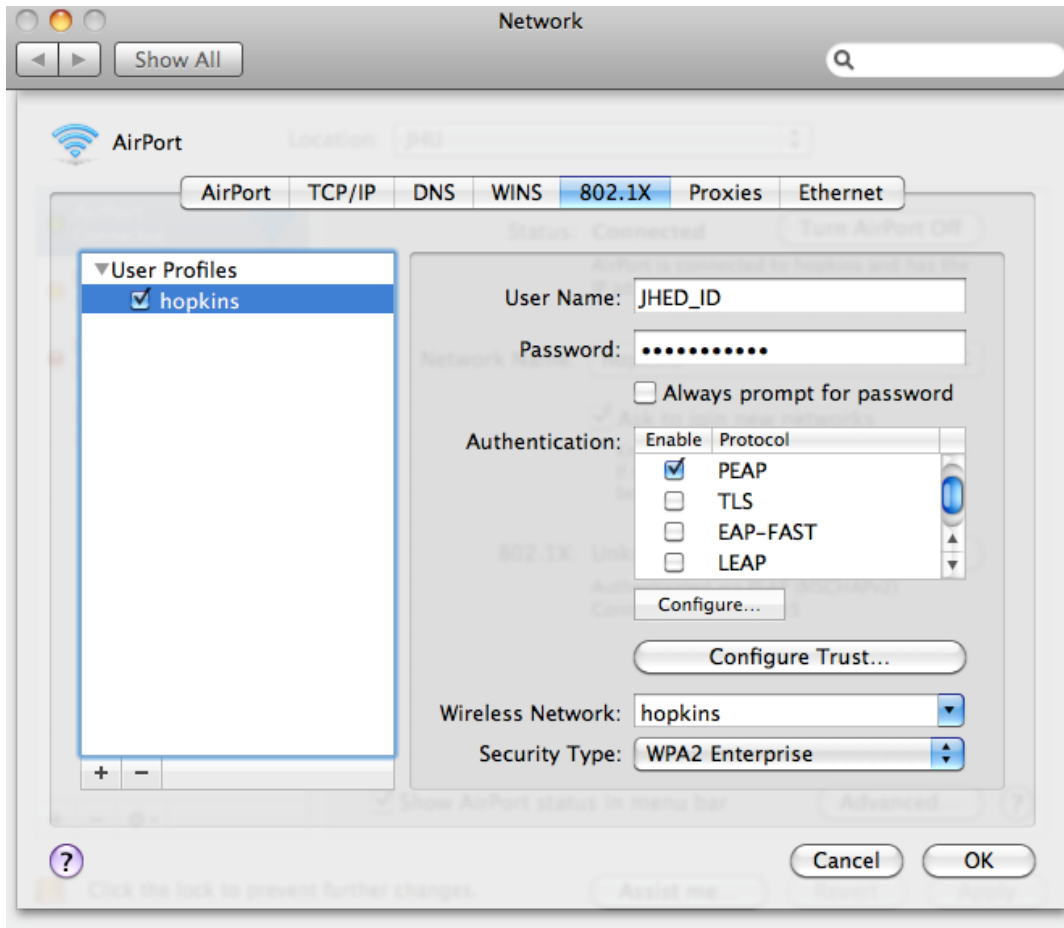


**Step 2:** Make sure **Airport** is selected and click on **Advanced**.

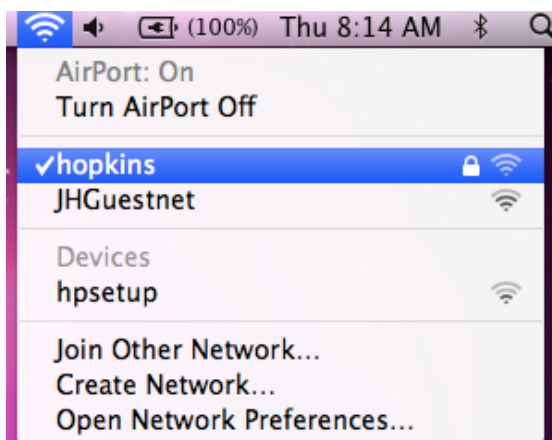


## Wireless @ Johns Hopkins

**Step 3:** Select the **802.1X** tab on the top line. For **User Name**, input your **JHED\_ID** and **password**. For **Authentication**, make sure ONLY **PEAP** is selected. For the **Wireless Network** type **hopkins**. For **Security Type**, select **WPA2 Enterprise**. Click **OK**.



**Step 4:** Click on **Airport** Icon and select **'hopkins'** network.

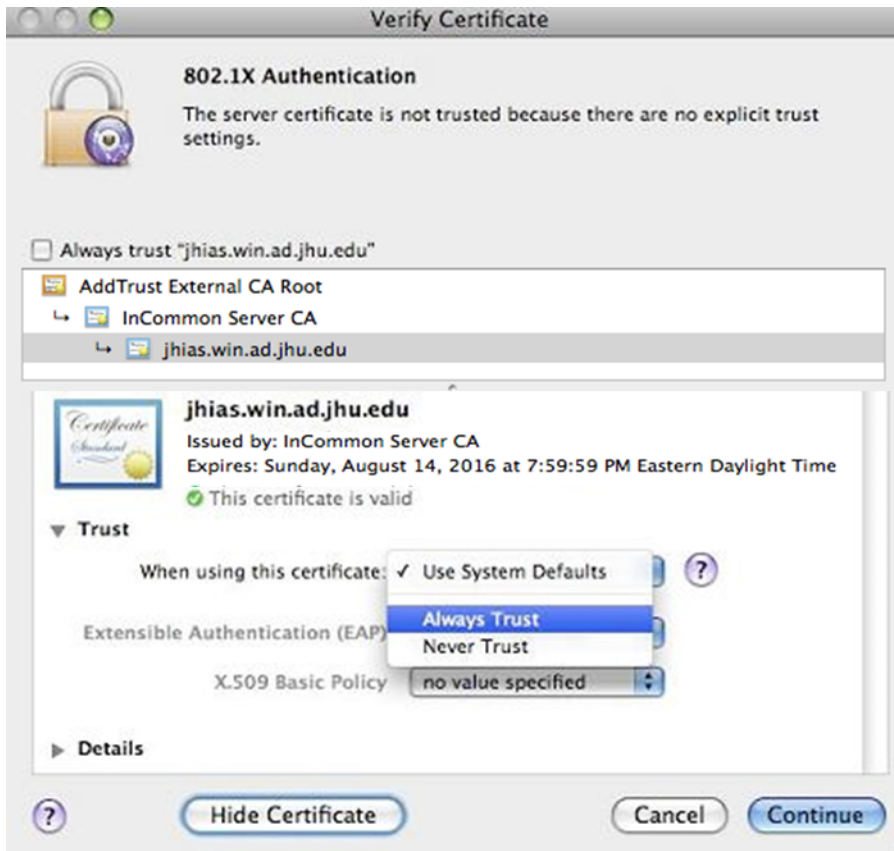


## Wireless @ Johns Hopkins

**Step 5:** You will be prompted to accept our certificate. Click on **Show Certificate**.



**Step 6:** You must trust this certificate. Click on the arrow beside the certificate **Trust** settings to expand the option. When using this certificate select **Always Trust**.



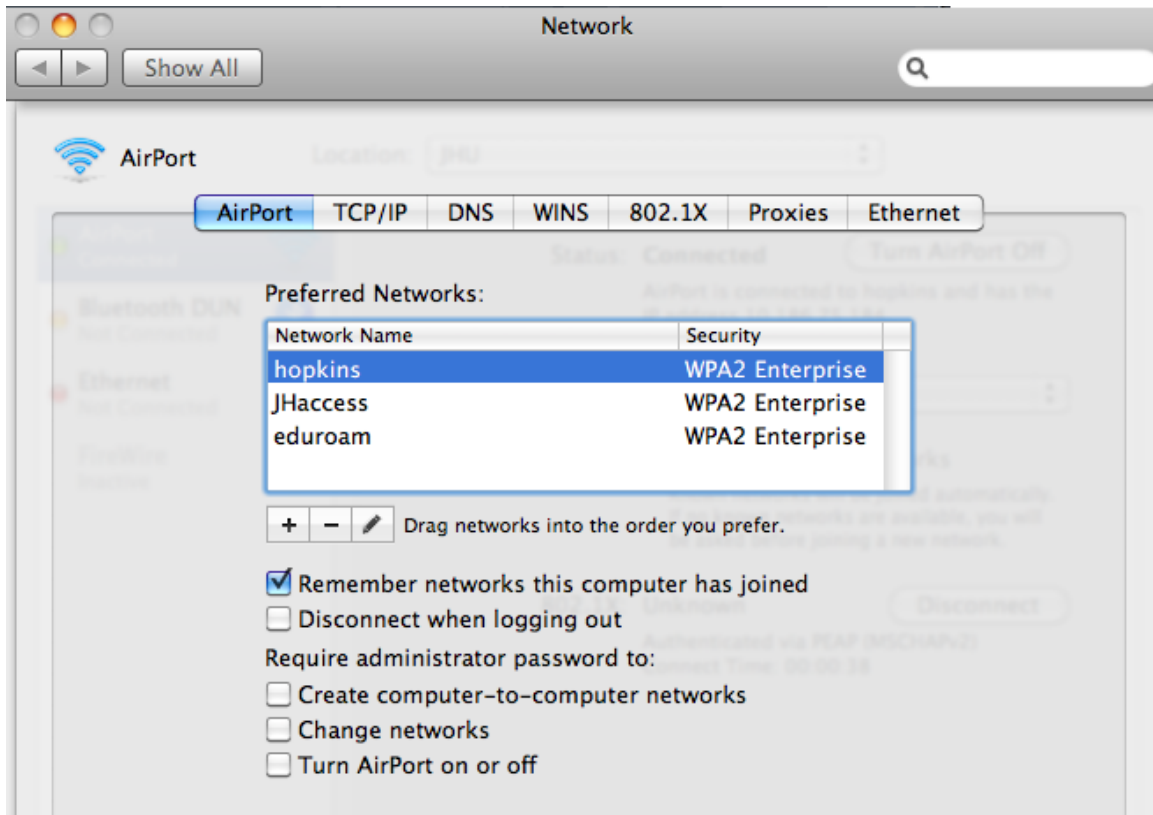
NOTE: You will be prompted for your Mac OS X username and password. Then click **Continue**.

# Wireless @ Johns Hopkins

**Step 7:** Enter your **JHED ID** and **password**.

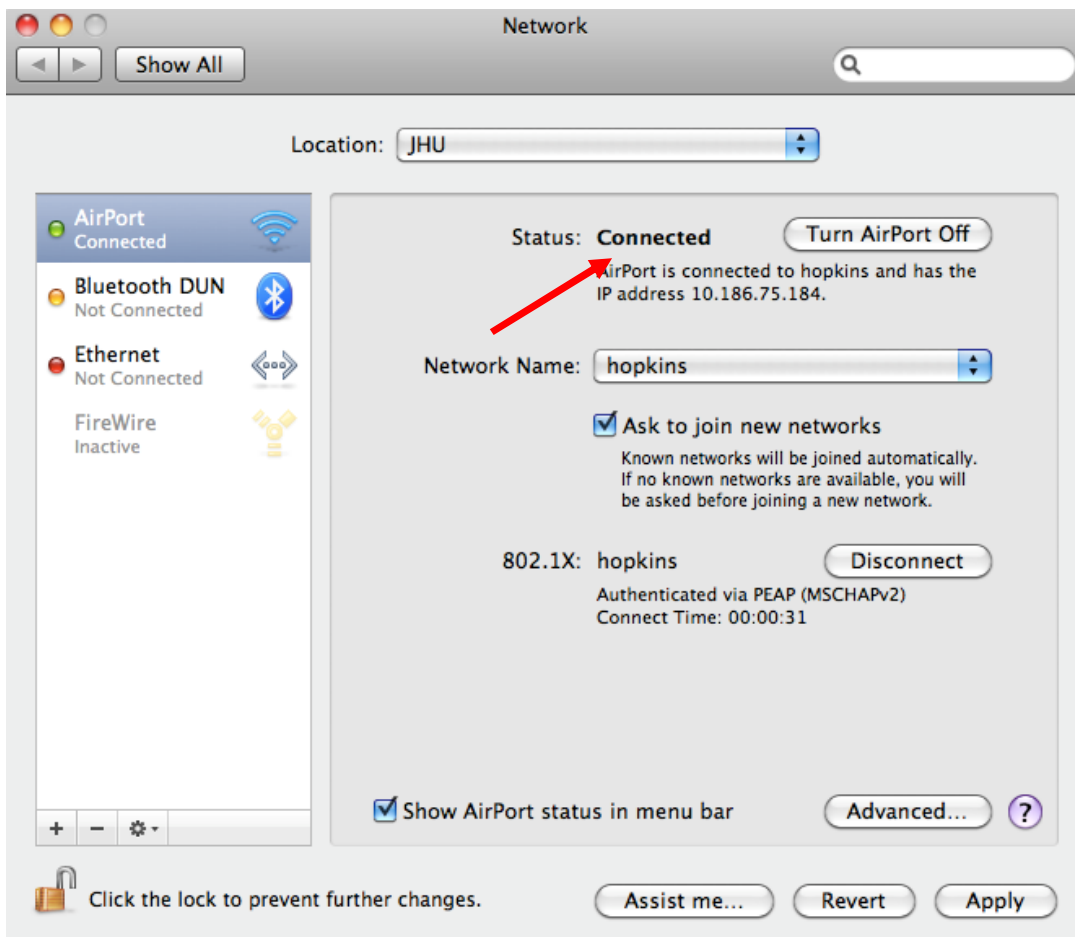


**Step 8:** Verify that the 'hopkins' network appears only **ONE** time.



## Wireless @ Johns Hopkins

**Step 9:** Verify the **Status** of the connection. You can also click the **Lock** icon to prevent further changes.



**You are now on the network!**

### **Where do I get additional help?**

#### **Homewood Campus:**

##### **Technical Assistance (walk-up)**

Garland Hall Basement

Monday -Friday 8:00 AM – 4:30 PM

##### **Contact the Support Center at:**

(410) 955-HELP [(410) 955-4357] Johns Hopkins East Baltimore

(410) 516-HELP [(410) 516-4357] Johns Hopkins Homewood Campus

(443) 997-HELP [(443) 997-4357] Johns Hopkins Mount Washington