

Wireless @ Johns Hopkins

Wireless Configuration Guide:

Windows 7

Additional hopkins wireless network instructions and requirements for Windows XP, Vista, 8, Mac OS X, Linux, and other Mobile versions can be found at:

<http://www.it.johnshopkins.edu/services/network/wireless/>

The Johns Hopkins Institutions offer the **hopkins** wireless network to faculty, staff, students, or anyone with a valid JHED ID. The **hopkins** wireless network utilizes WiFi Protected Access (WPA2) with 256-bit Advanced Encryption Standard (AES), to provide a high level of security and access.

Requirements for Windows 7:

1. The network card must support the 802.11b and/or 802.11g protocol(s) as well as support WiFi Protected Access (WPA2-Enterprise).
2. You must have the current drivers for your network card which are usually available from the PC vendor's web site.
3. Microsoft System Center Endpoint Protection (SCEP) must be installed. It is free for Hopkins affiliates, and can be downloaded at <http://it.johnshopkins.edu/antivirus/>.

How do I find out my JHED account information?

The following steps will allow you to activate your JHED ID. You will need access to a wired (ethernet) connection.


Step 1: Open a web browser and go to <http://my.johnshopkins.edu>.

Step 2: Click the **First Time JHED User** link.

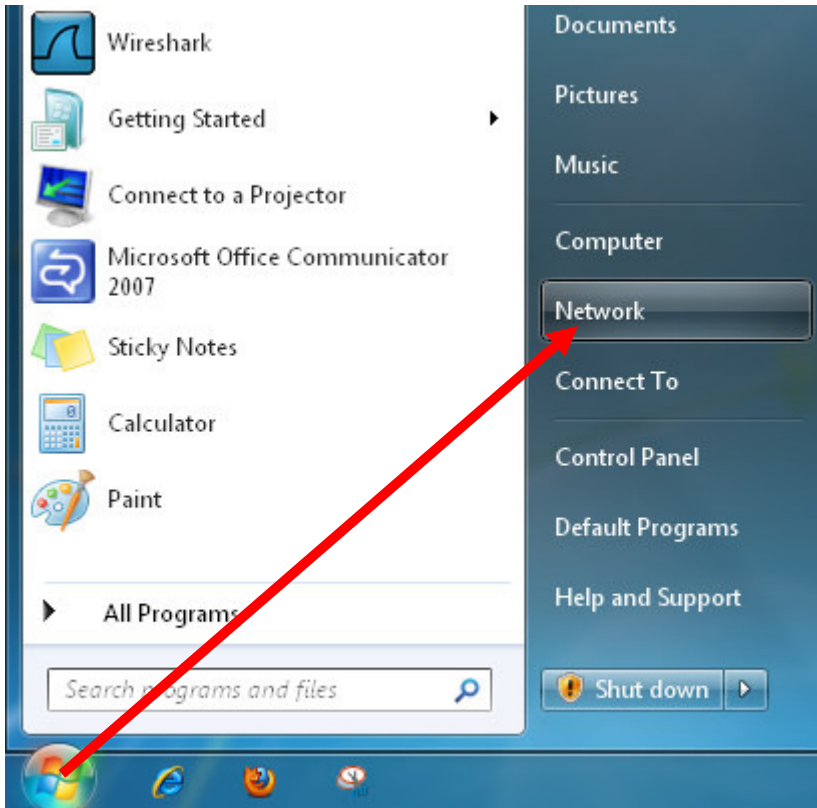
Step 3: Follow the instructions on the login page to find out your Login ID and to set your password.

JHED account and Active Directory credentials should be the same except for some grandfathered accounts. If you have issues with signing in when asked for your User ID and password, please contact the Help Desk, (410) 955-HELP, to correct the issue.

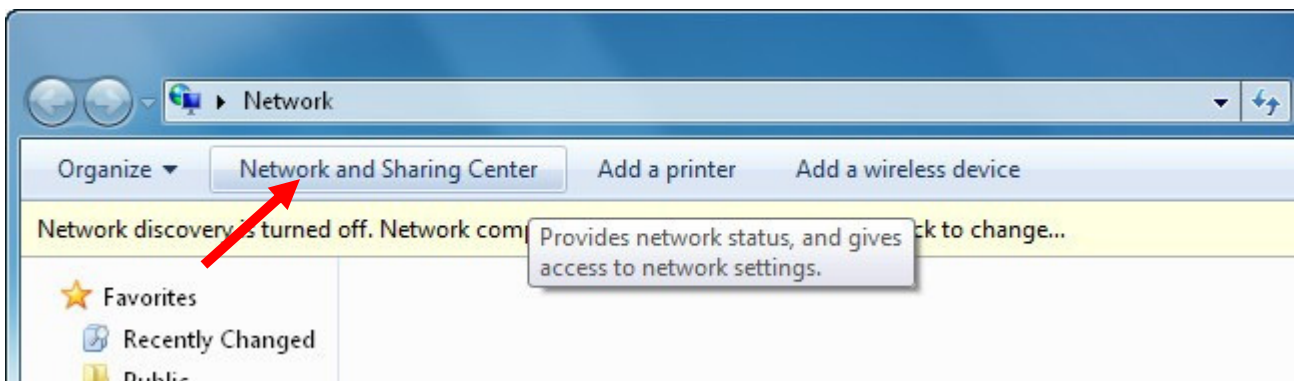
How to configure “hopkins” wireless for Windows 7:

Step 1: Click on the Start ICON .

Click on **Network** from the menu.

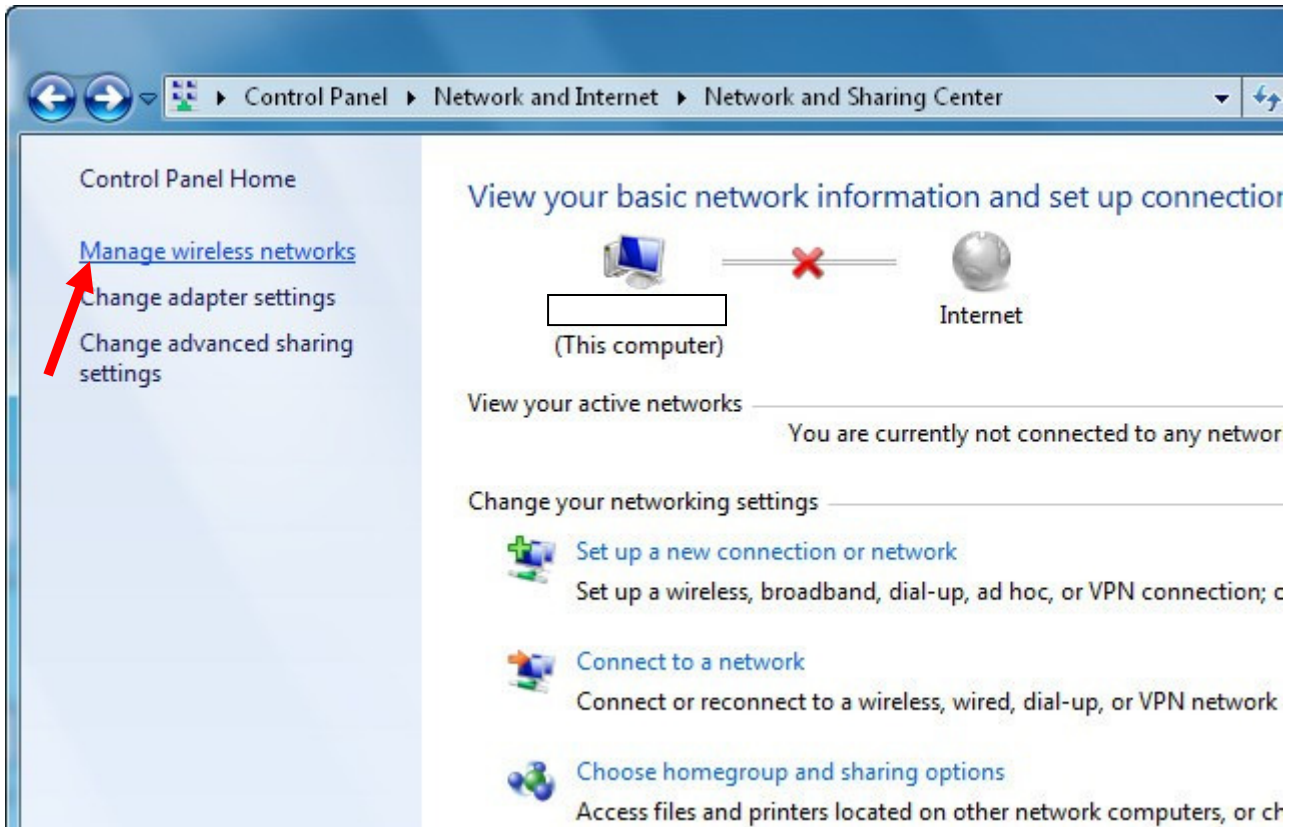


Step 2: Select **Network and Sharing Center**.

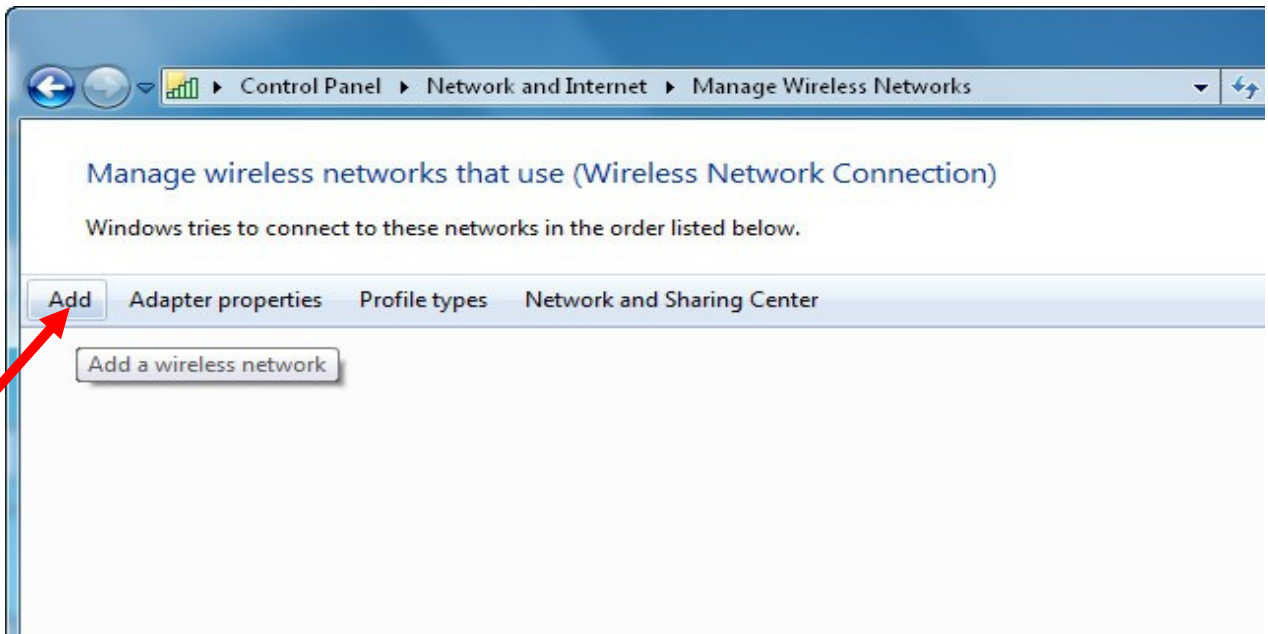


Wireless @ Johns Hopkins

Step 3: Select **Manage wireless networks**.

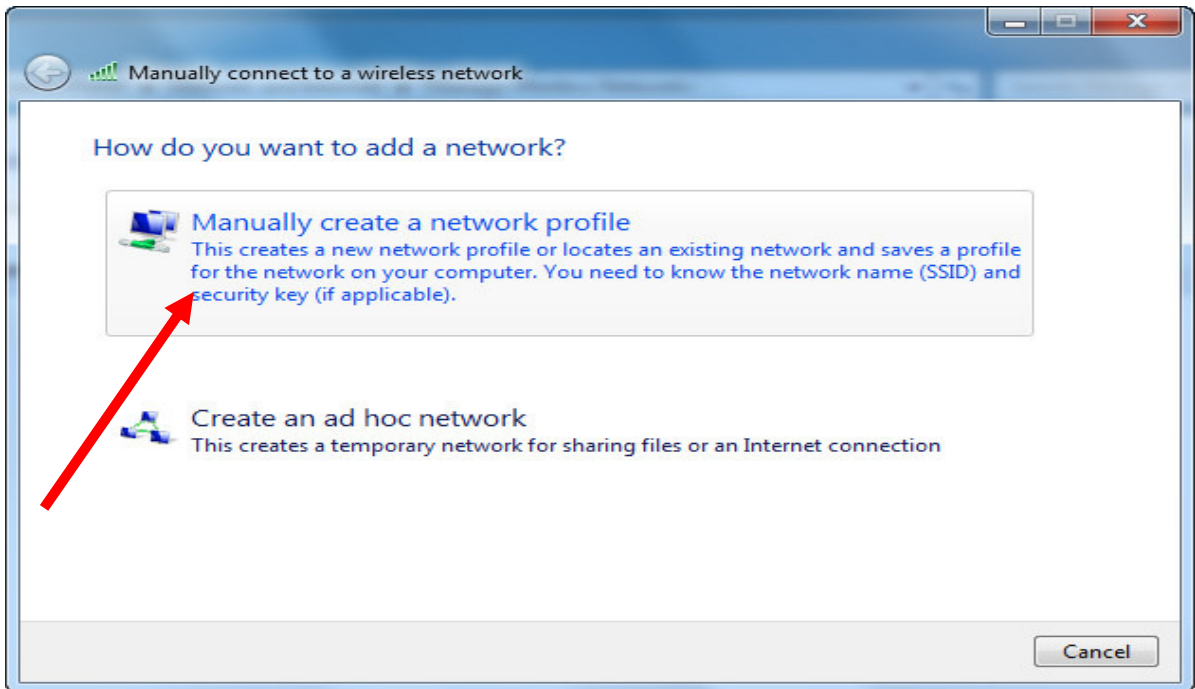


Step 4: Click **Add**.

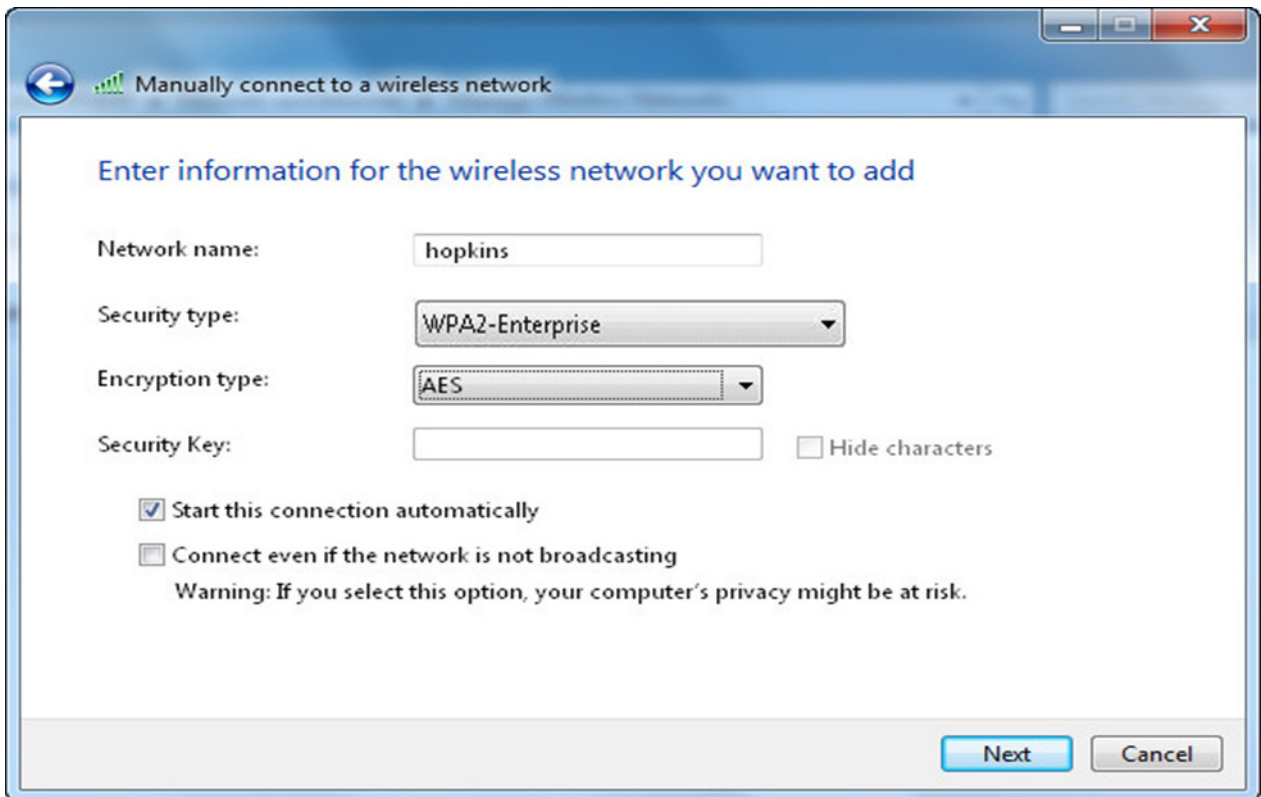


Wireless @ Johns Hopkins

Step 5: Select **Manually create a network profile**.



Step 6: For **Network name**, enter **hopkins**. For **Security type**, select **WPA2-Enterprise**. For **Encryption type**, select **AES**. Click the **Next** button.

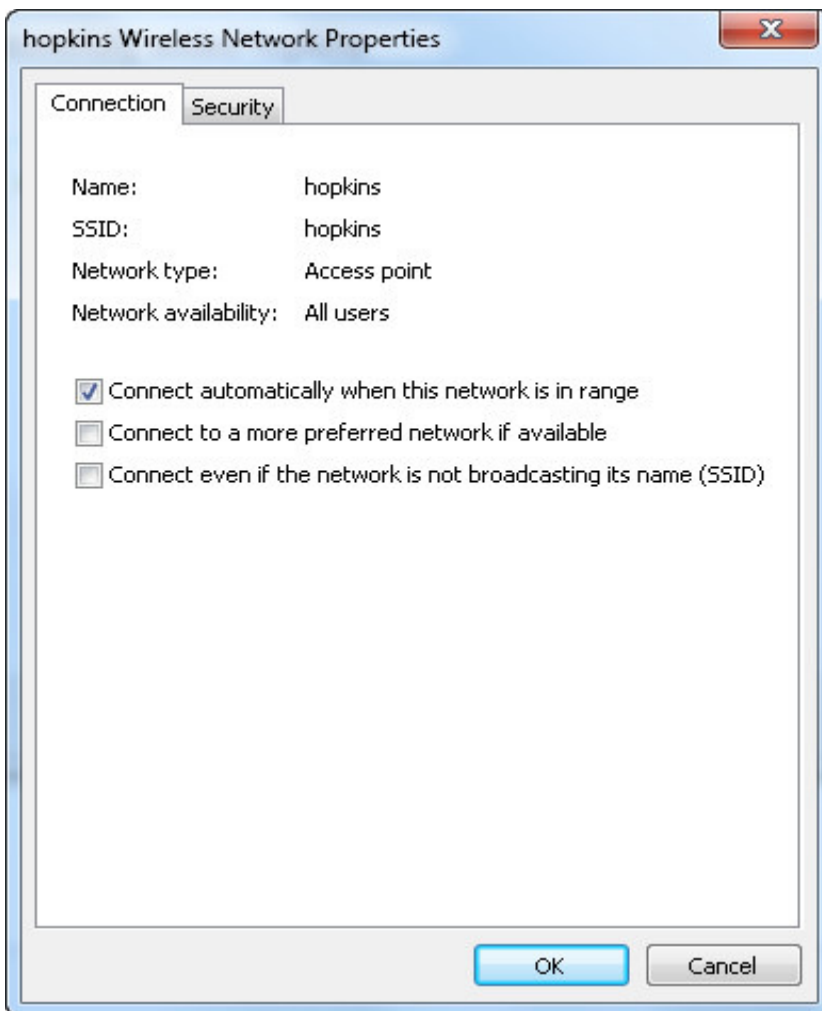


Wireless @ Johns Hopkins

Step 7: Select **Change connection settings**.

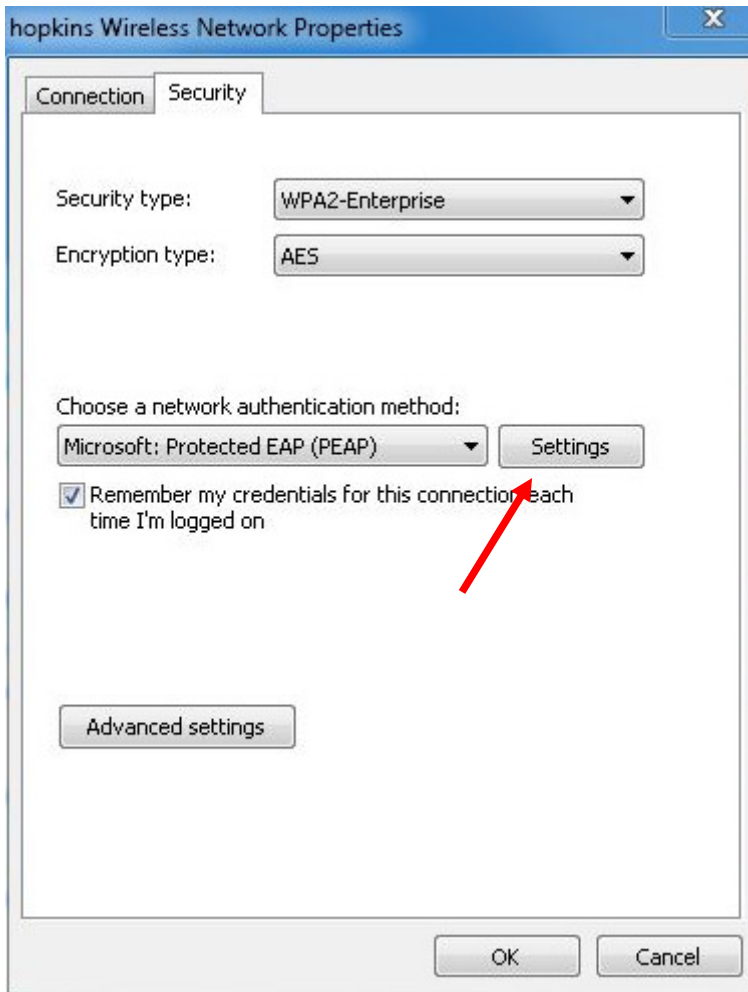


Step 8: Make sure the first box is **checked**. Select the **Security** tab at top.



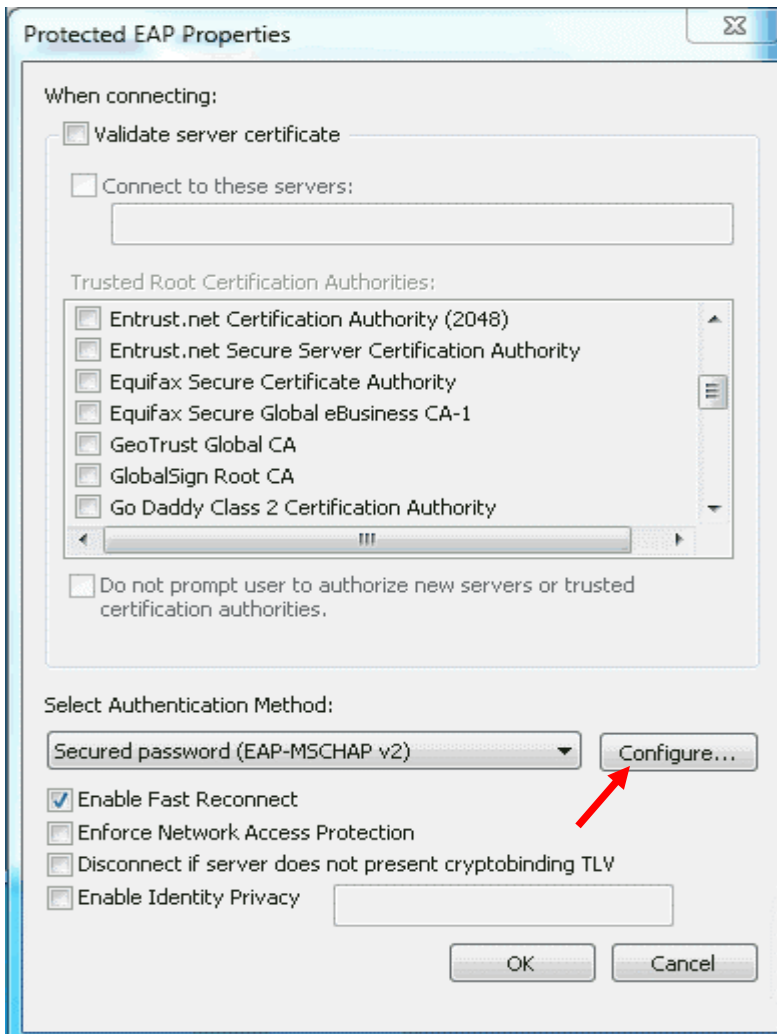
Wireless @ Johns Hopkins

Step 9: For **Security type**, select **WPA2-Enterprise**. For **Encryption type**, select **AES**. Choose **PEAP** for **authentication method**. Check the box for “Remember my credentials.” Click on **Settings...**



Wireless @ Johns Hopkins

Step 10: Uncheck any boxes in “Trusted Root Certification Authorities,” then **uncheck** “Validate Server Certificate.” **Select** “Secured password EAP-MSCHAPV2.” **Check** “Enable Fast Reconnect.” **Click on Configure...**

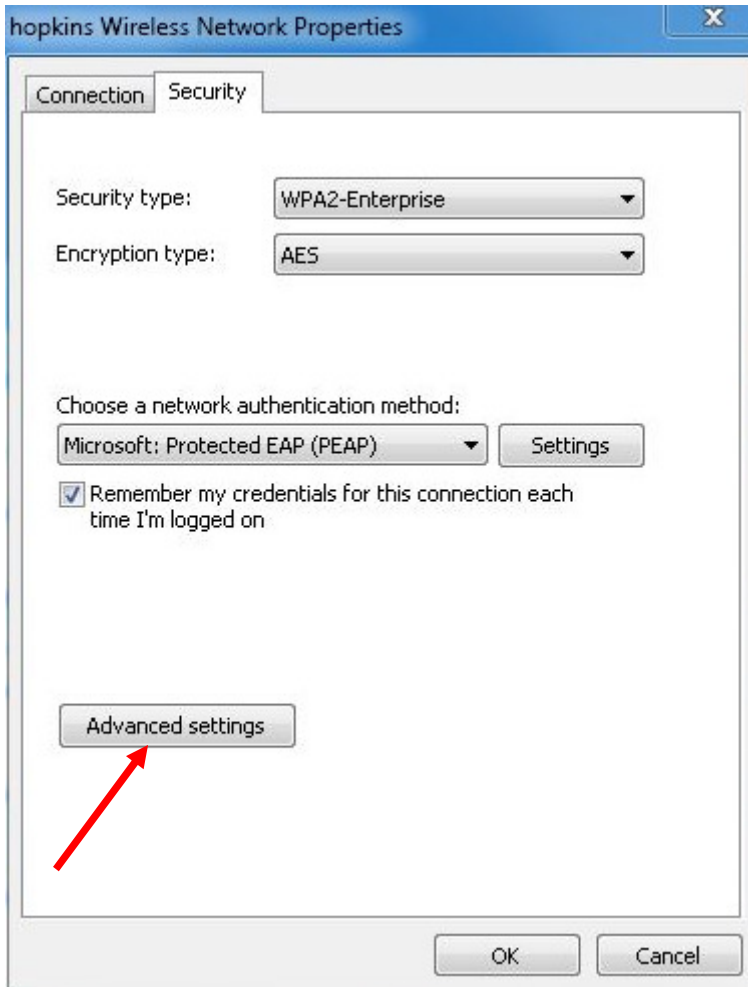


Step 11: Uncheck the box next to “Automatically use my Windows logon” Click **OK**. Click **OK** on Protected EAP properties box.



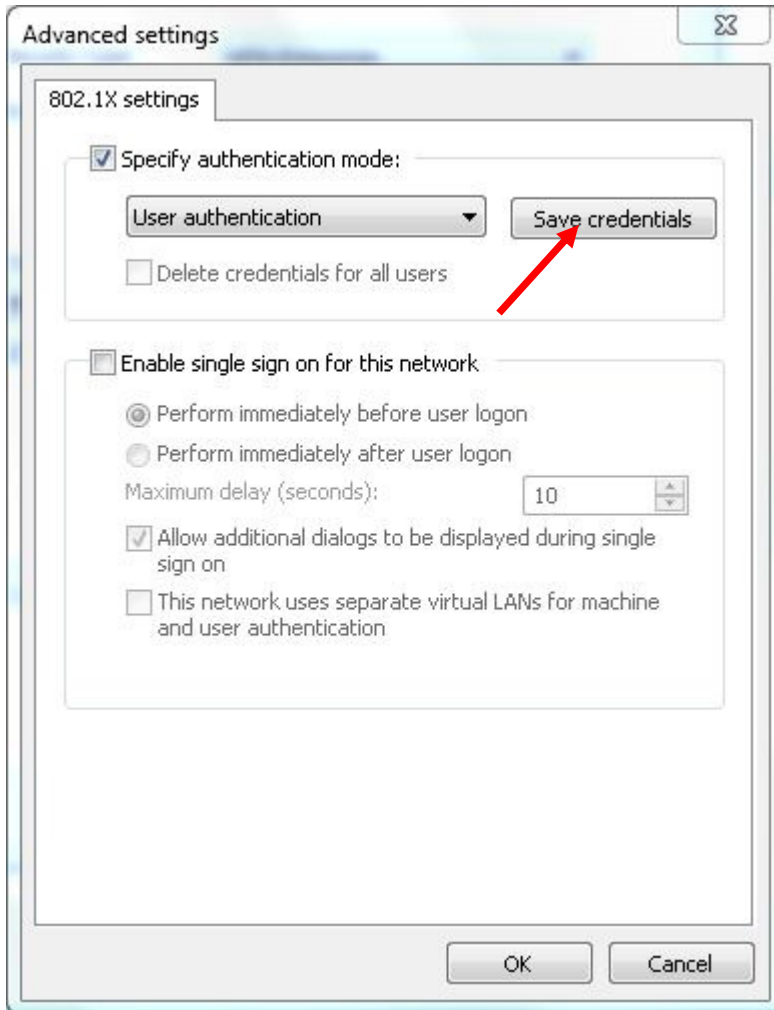
Wireless @ Johns Hopkins

Step 12: Back on the “hopkins wireless network properties” window, click on **Advanced settings...**

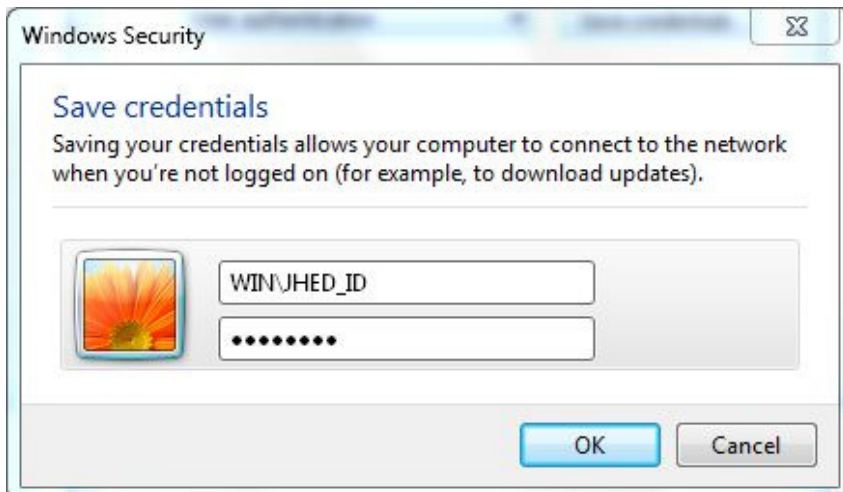


Wireless @ Johns Hopkins

Step 13: Check the first box “Specify authentication mode.” Then choose the “User authentication” option. Then click on **Save credentials...**



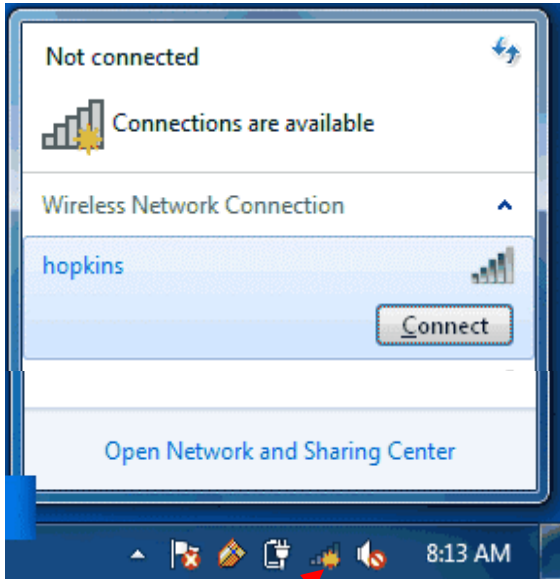
Step 14: Enter **WIN**[your JHED ID] and password.



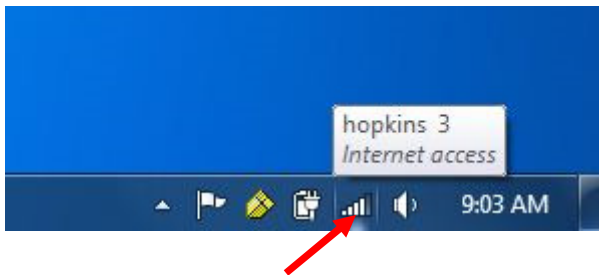
Wireless @ Johns Hopkins

Step 15: Click **OK** three times to save all the settings. Go to main desktop

Step 16: You should connect automatically. If not, click the wireless icon on the task bar and **Connect** to the “hopkins” network.



Step 17: You can check your connection status on the task bar.



You are now on the network!

Where do I get additional help?

Technical Assistance (walk-up)

Garland Hall Basement

Monday – Friday 8:00 AM - 4:30 PM

Contact the Support Center at:

(410)955-HELP [(410)955-4357]

Johns Hopkins East Baltimore

(410)516-HELP [(410)516-4357]

Johns Hopkins Homewood Campus

(443)997-HELP [(443)997-4357]

Johns Hopkins Mount Washington